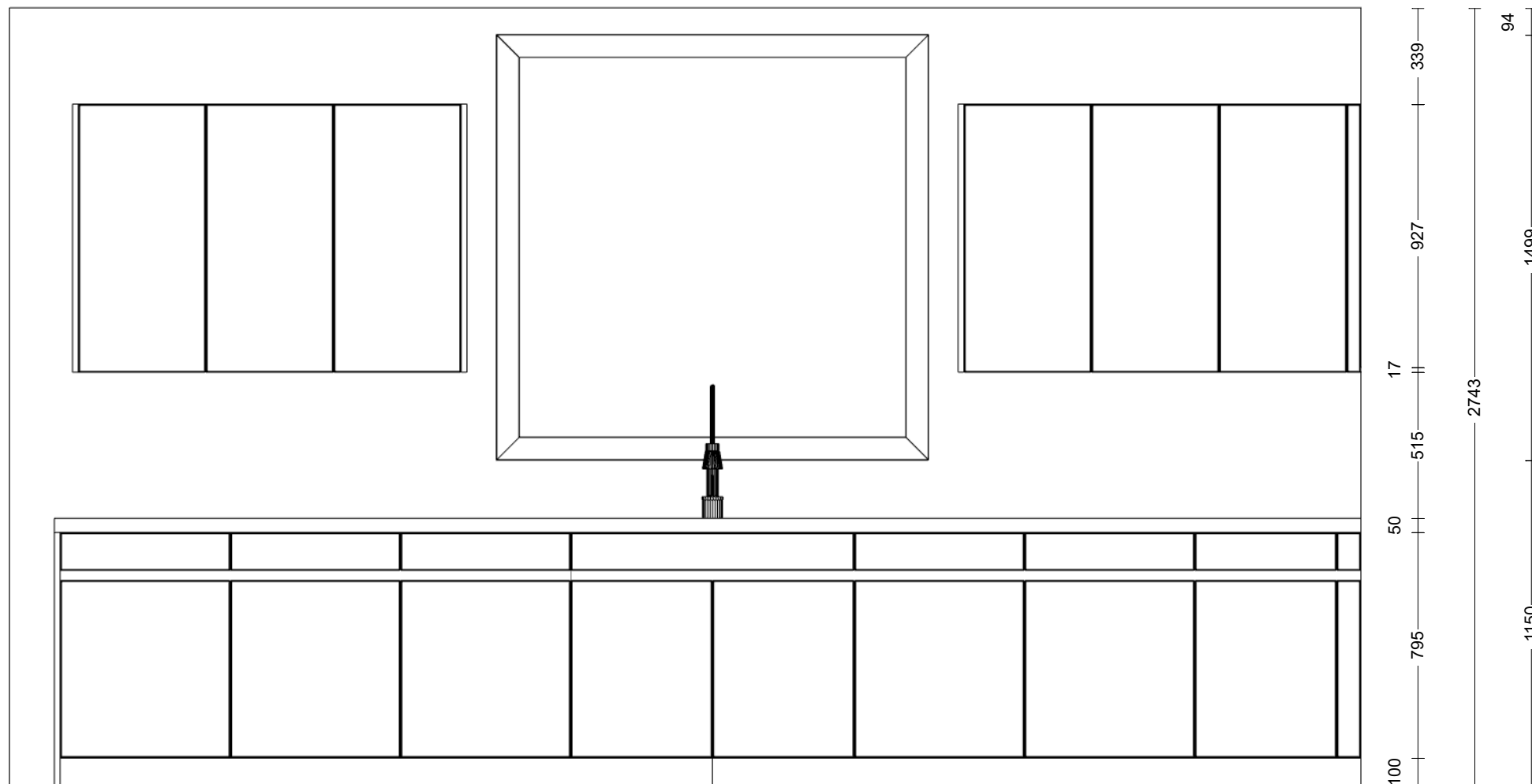


FRMAT 20 FRMAT 20 FRMAT 20 AOP2093 50
 | 223 | | AO9093 900 | | AO4593 450 | | 1732 | | AO4593 450 | | AO9093 900 | |



FRMAT 20 ATP2080S 86
 | 159 | | AT6080SZIZ 600 | | AT6080SZIS2 600 | | AT6080SZWH 600 | | ATSP1008068BG 1000 | | AGFV608061S 600 | | AT6080SZIZ 600 | | AT5080SZIZ 500 | |

| 1717 | | 1524 | | 1524 | |
 | 4765 |

LEICHT



Commission:

Design:

Date:

14.10.2020

View:

Elevation / Scale-to-fit

Manufacturer:

Leicht Collection 2020 EN

Program:

454 TOCCO-A

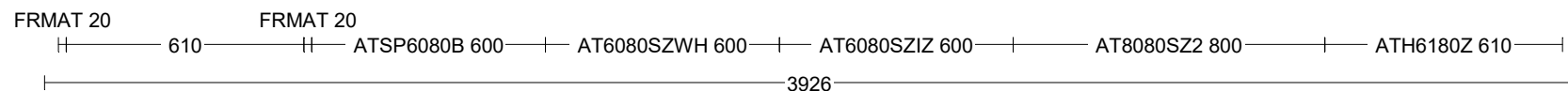
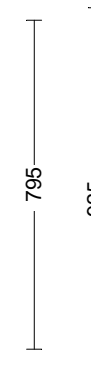
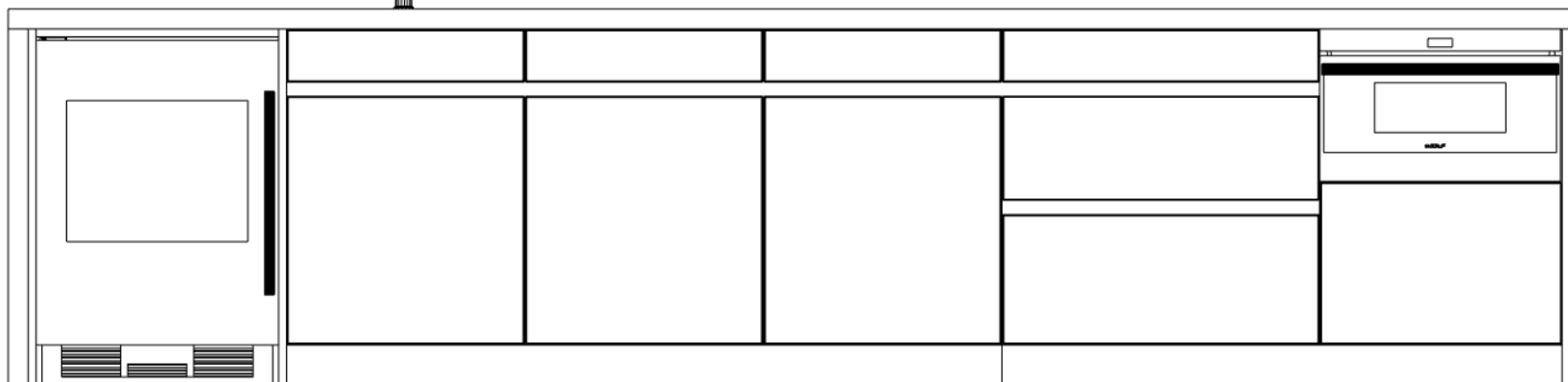
Handle:

88632 Recessed handle horiz. 886.284

Worktop col.:

The images are only to provide a graphical overview; they don't fit precisely. There may be differences in the colours and grain patterns. Front arrangement subject to modification for manufacturer reasons.

KPS designstudio



LEICHT



Commission:

Design:

Date:

14.10.2020

View:

Elevation / Scale-to-fit

Manufacturer:

Leicht Collection 2020 EN

Program:

454 TOCCO-A

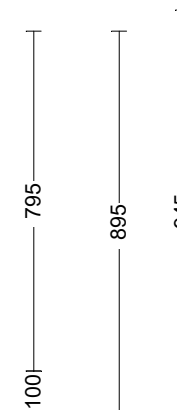
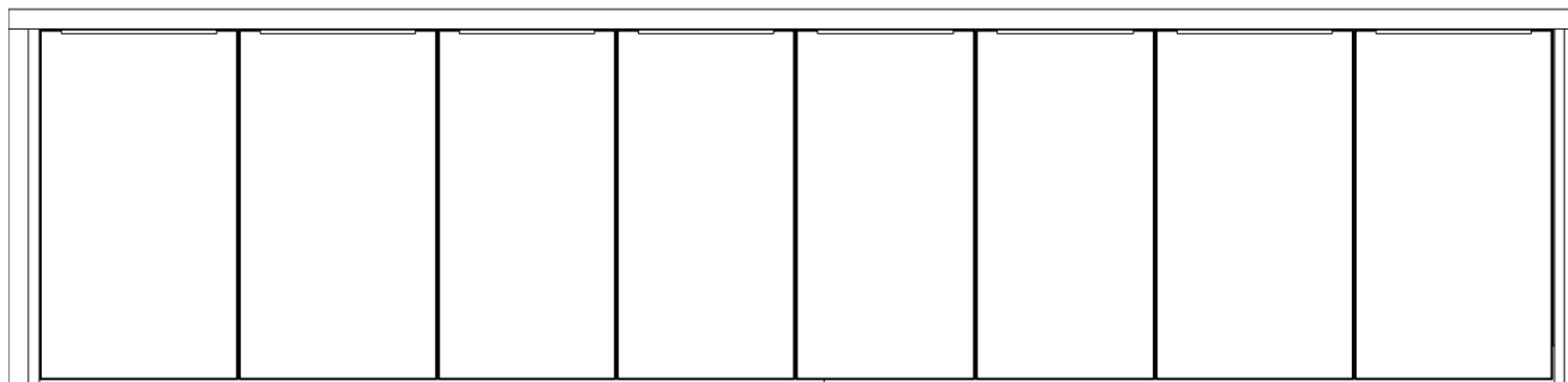
Handle:

88632 Recessed handle horiz. 886.284

Worktop col.:

The images are only to provide a graphical overview; they don't fit precisely. There may be differences in the colours and grain patterns. Front arrangement subject to modification for manufacturer reasons.

KPS designstudio



W310 28 T1008036 1000 T908036 900 T908036 904 T1008036 1000 W310 28

LEICHT



Commission:

Design:

Date:

14.10.2020

View:

Elevation / Scale-to-fit

Manufacturer:

Leicht Collection 2020 EN

Program:

454 TOCCO-A

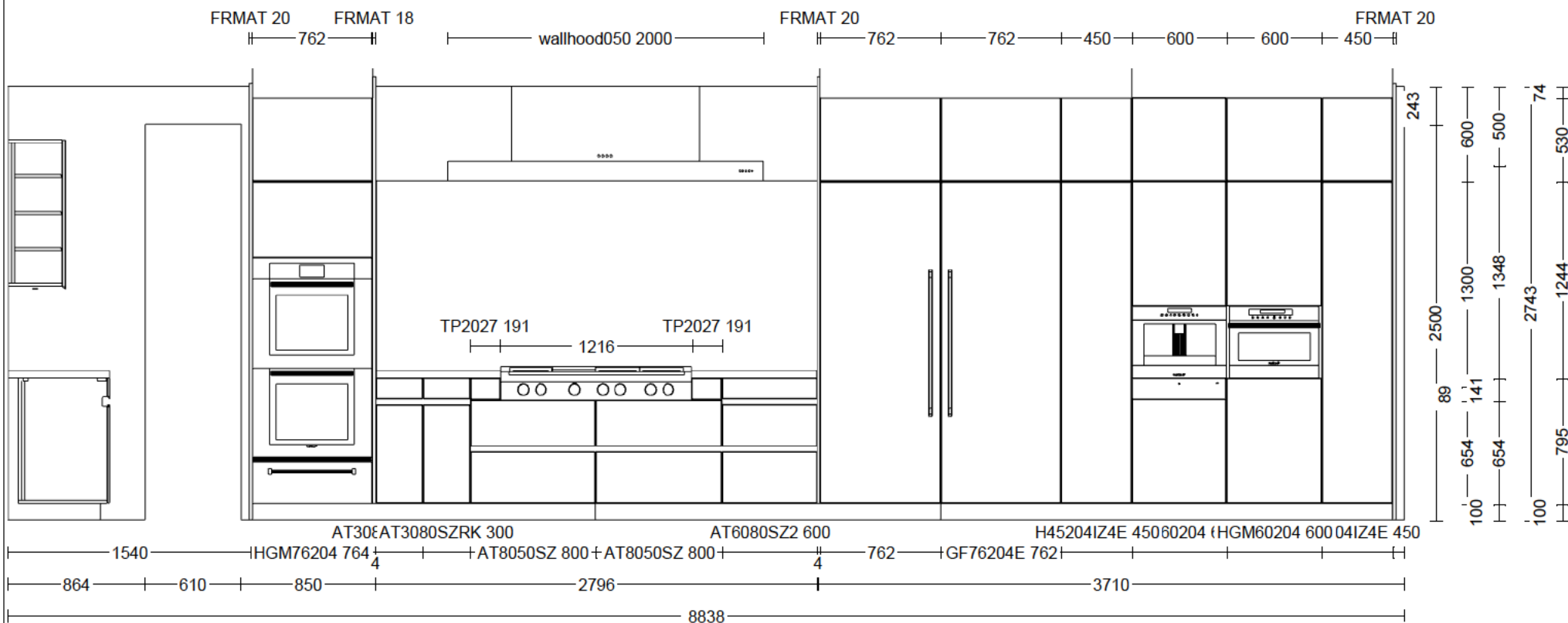
Handle:

88632 Recessed handle horiz. 886.284

Worktop col.:

The images are only to provide a graphical overview; they don't fit precisely. There may be differences in the colours and grain patterns. Front arrangement subject to modification for manufacturer reasons.

KPS designstudio



LEICHT



Commission:

Design:

Date:

14.10.2020

View:

Elevation / Scale-to-fit

Manufacturer:

Leicht Collection 2020 EN

Program:

454 TOCCO-A

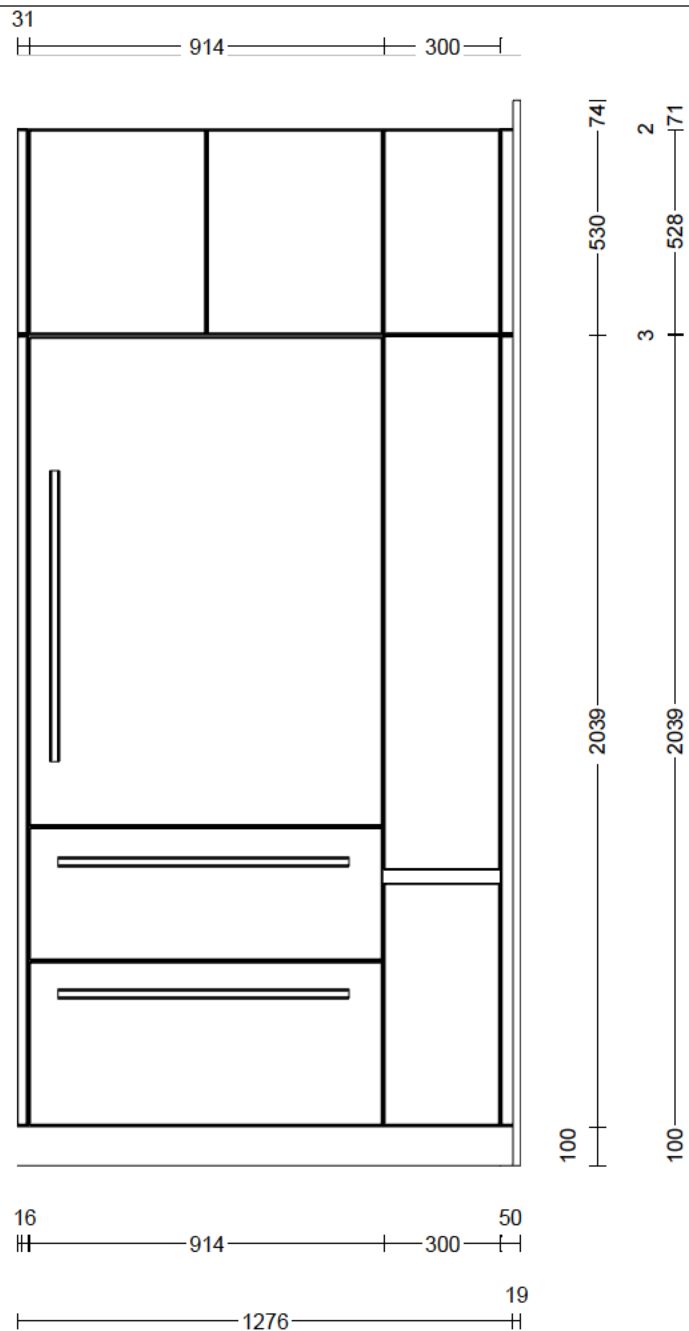
Handle:

88632 Recessed handle horiz. 886.284

Worktop col.:

The images are only to provide a graphical overview; they don't fit precisely. There may be differences in the colours and grain patterns. Front arrangement subject to modification for manufacturer reasons.

KPS designstudio



LEICHT



Commission:

Design:

Date:

14.10.2020

View:

Elevation / Scale-to-fit

Manufacturer:

Leicht Collection 2020 EN

Program:

454 TOCCO-A

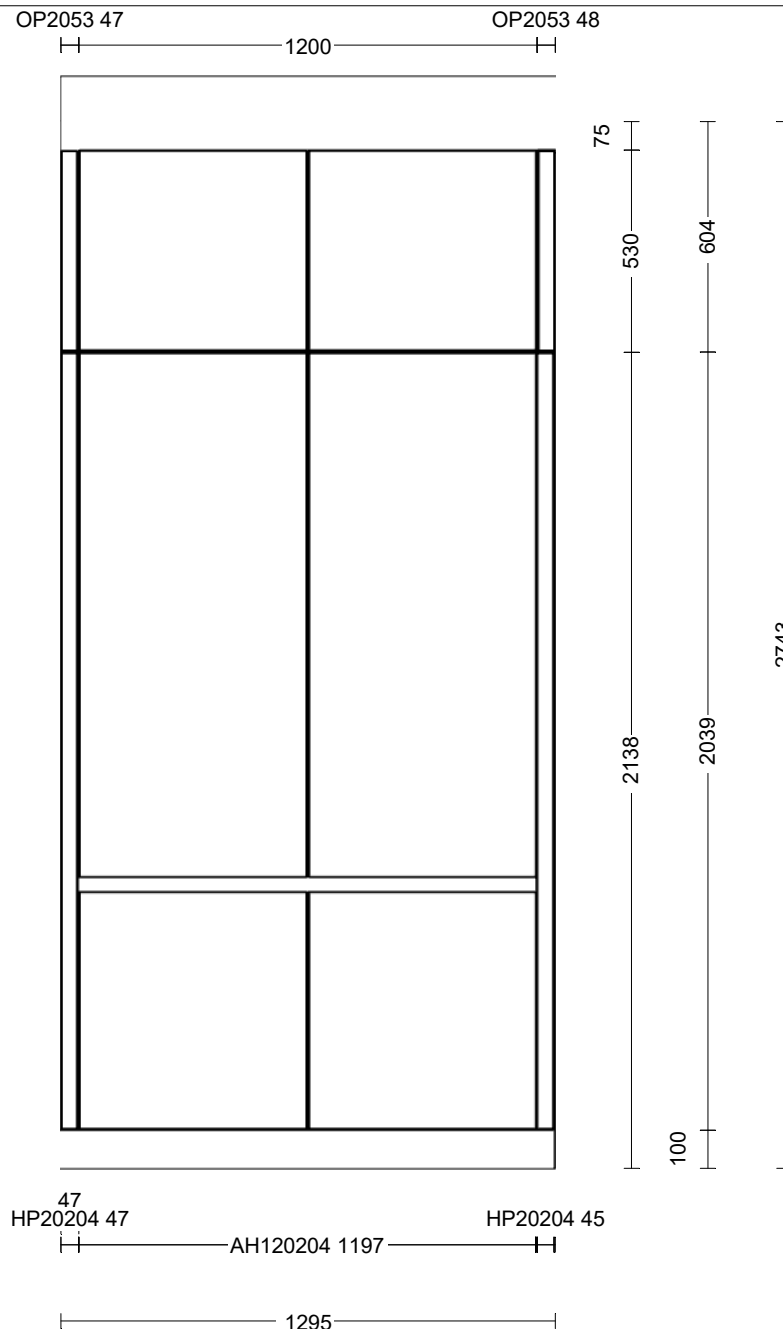
Handle:

88632 Recessed handle horiz. 886.284

Worktop col.:

The images are only to provide a graphical overview; they don't fit precisely. There may be differences in the colours and grain patterns. Front arrangement subject to modification for manufacturer reasons.

KPS designstudio



LEICHT



Commission:

Design:

Date:

14.10.2020

View:

Elevation / Scale-to-fit

Manufacturer:

Leicht Collection 2020 EN

Program:

454 TOCCO-A

Handle:

88632 Recessed handle horiz. 886.284

Worktop col.:

The images are only to provide a graphical overview; they don't fit precisely. There may be differences in the colours and grain patterns. Front arrangement subject to modification for manufacturer reasons.

KPS designstudio