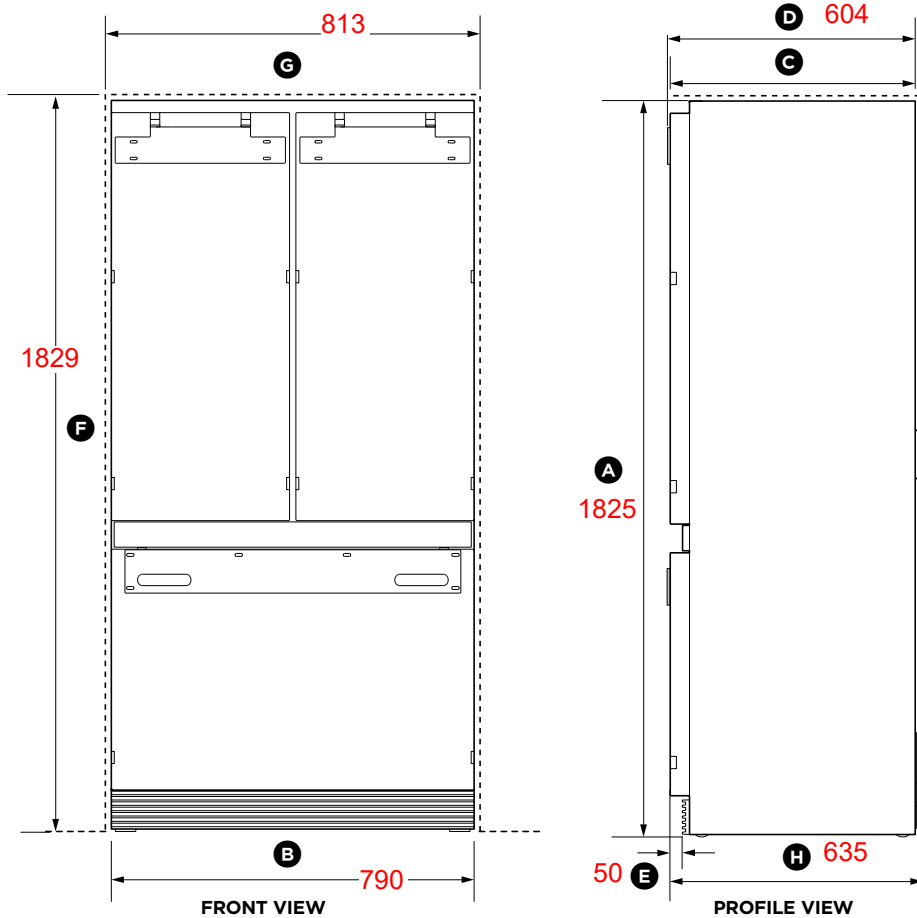


4

APPLIANCE AND CAVITY DIMENSIONS

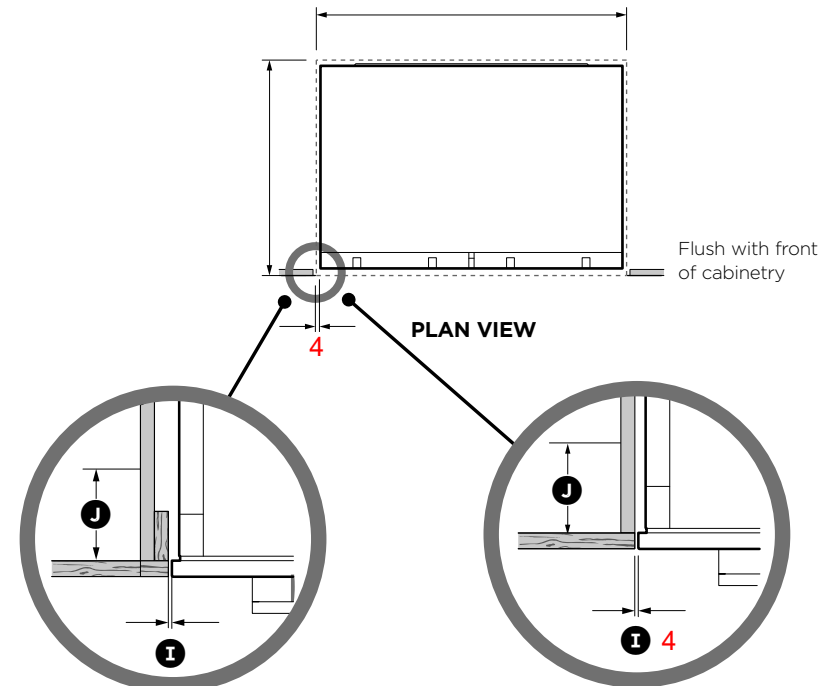
Fisher & Paykel Refrigerator

RS32A72J1



IMPORTANT!

For ease of installation, ensure cavity width is consistent top to bottom and height is consistent left to right.



Flush install
Framed: Finished return top and sides

Flush install
Frameless: Finished return top and sides

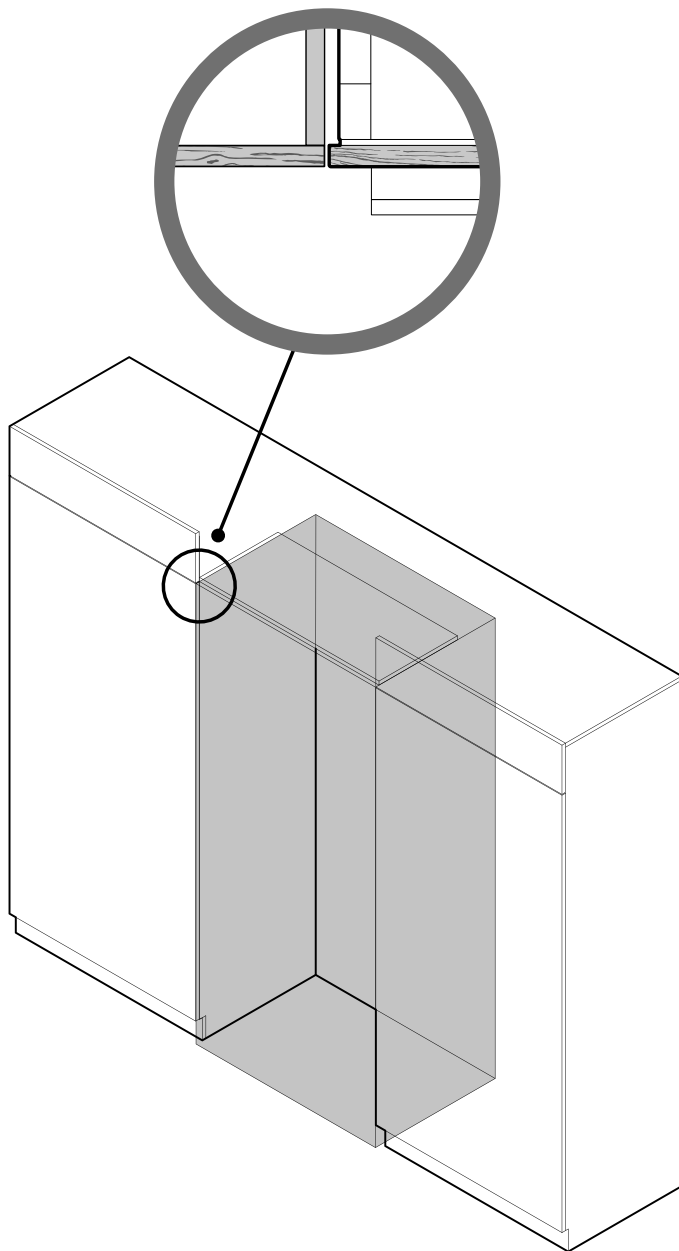
	RS32A		RS36A	
APPLIANCE DIMENSIONS	in	mm	in	mm
(A) Overall height of appliance*	71 7/8"	1825	71 7/8"	1825**
(B) Overall width of appliance	31 1/8"	790	35 1/16"	890
(C) Overall depth of appliance (without door panels and hanging brackets)	23 11/16"	602	23 11/16"	602
(D) Overall depth of appliance (with hanging brackets only)	23 3/4"	604	23 3/4"	604
(E) Depth of toe kick (excluding front of door panel)	2"	50	2"	50

* Includes mounted rollers (20mm adjustment upwards)

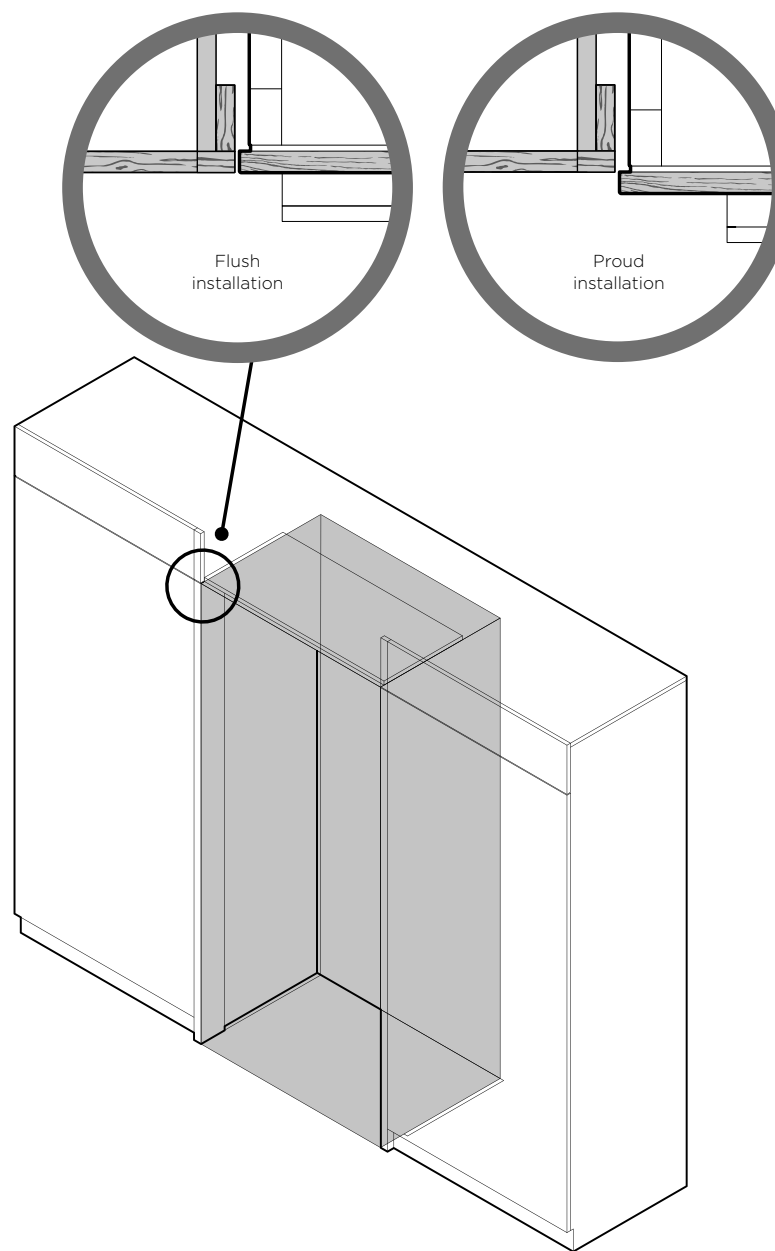
	RS32A		RS36A	
CAVITY DIMENSIONS	in	mm	in	mm
(F) Overall height of cavity	72	1829	72	1829
(G) Overall width of cavity	32	813	36	914
(H) Overall depth of cavity	25	635	25	635
(I) Minimum cabinetry gap clearance from edge of appliance	3/16	4	3/16	4
(J) Minimum required finished return	min 3 1/2	min 89	min 3 1/2	min 89

5 CABINETY OPTIONS

FRAMELESS CABINETY (Aligns the appliance with the cabinetry)



FRAMED CABINETY (Aligns the appliance with the frame of the cabinetry)

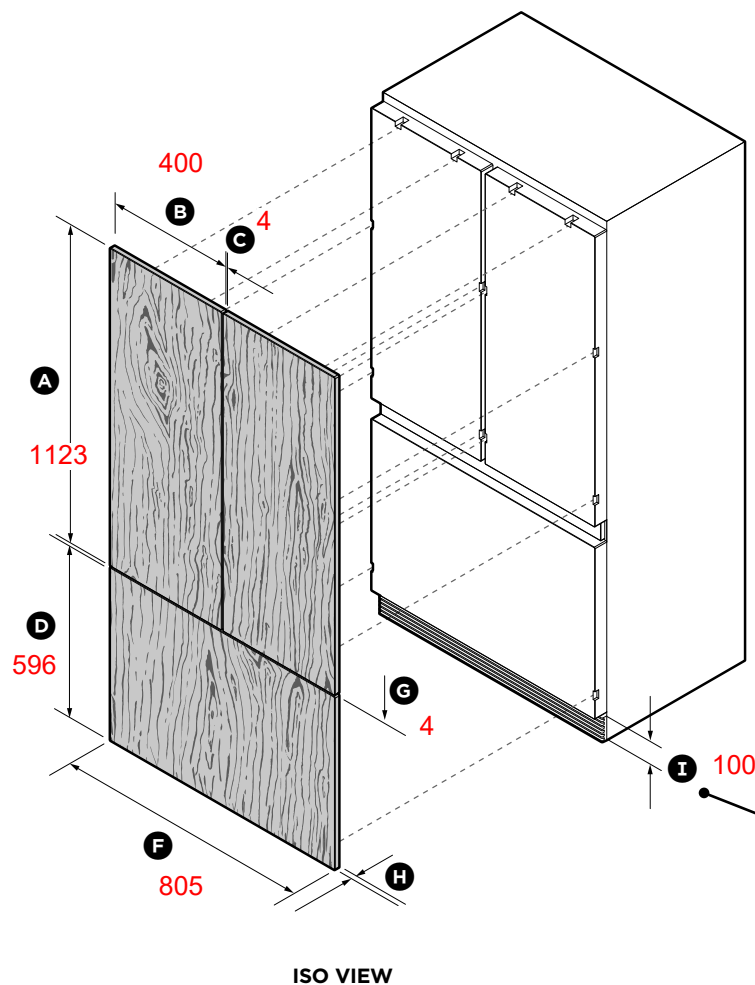


Note: Drawings are only for reference and not the actual cavity width of the cabinetry.

6 DOOR PANEL DIMENSIONS

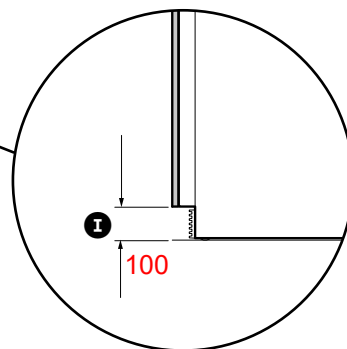
IMPORTANT!

- Custom door panels can only be used for non-Water dispensing models.
- Custom door panels to be manufactured and fitted by cabinetmaker.
- Door handle kit must be purchased separately.



STAINLESS STEEL/CUSTOM DOOR PANELS

STAINLESS STEEL/CUSTOM DOOR PANELS		RS32A72		RS36A72	
DIMENSIONS		in	mm	in	mm
(A)	Height of each top door panel	44 3/16"	1123	44 3/16"	1123
(B)	Width of each top door panel	15 3/4"	400	17 3/4"	451
(C)	Gap between top door panels	3/16"	4	3/16"	4
(D)	Height of bottom drawer panel	23 7/16"	596	23 7/16"	596
(E)	Height from bottom of product to top of drawer panel	27 1/2"	698	27 1/2"	698
(F)	Width of bottom drawer panel	31 11/16"	805	35 11/16"	906
(G)	Gap between top door panels and bottom drawer panel	3/16"	4	3/16"	4
(H)	Depth of door and drawer panels (excluding handle)				
	Stainless steel	3/4"	19	3/4"	19
	Custom	5/8"-3/4"	16-19	5/8"-3/4"	16-19
(I)	Height of toe kick (from bottom of drawer to floor)	3 15/16	100	4"	102
DOOR PANEL WEIGHT		lbs	kg	lbs	kg
Maximum weight of each top door panel (with handle)		22	10	22	10
Maximum weight of bottom drawer panel (with handle)		24 1/4	11	24 1/4	11



INSTALLING THE OVEN IN A CABINET

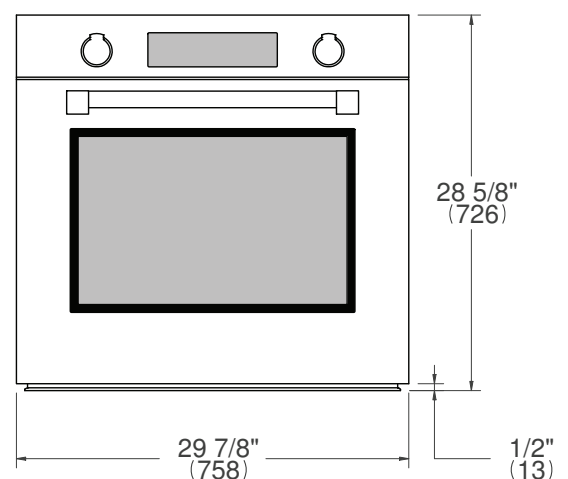
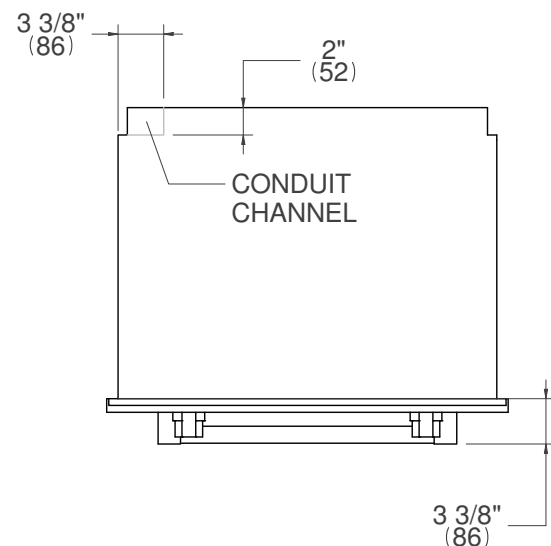
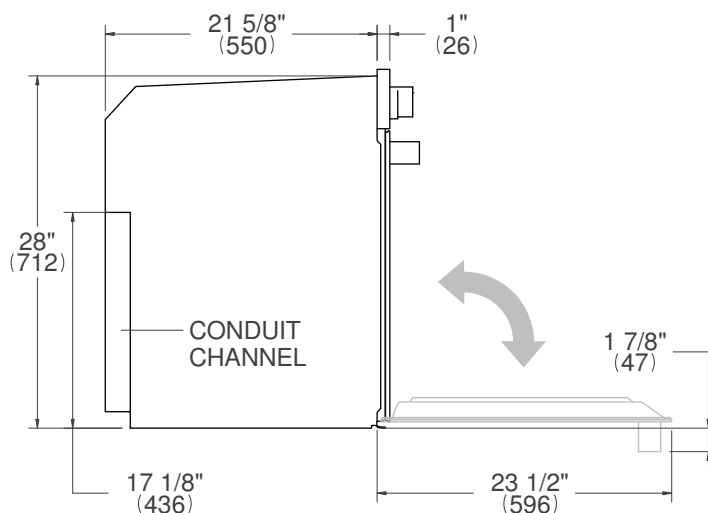
Ensure that the oven is fully present and undamaged after removing all loose parts from their inner and outer packaging. In the event of any uncertainty, do not use the appliance and contact technical support.

Check that the kitchen unit is suitable for installation of the oven, referring to the dimensions given in this guide.

IMPORTANT INFORMATION

Some environmental factors and cooking habits can cause condensation in and around the oven during use. To protect surrounding cabinetry from possible damage caused by frequent or excessive condensation, we recommend moisture-proofing the oven cavity.

SPECIFICATIONS



BEFORE INSTALLATION

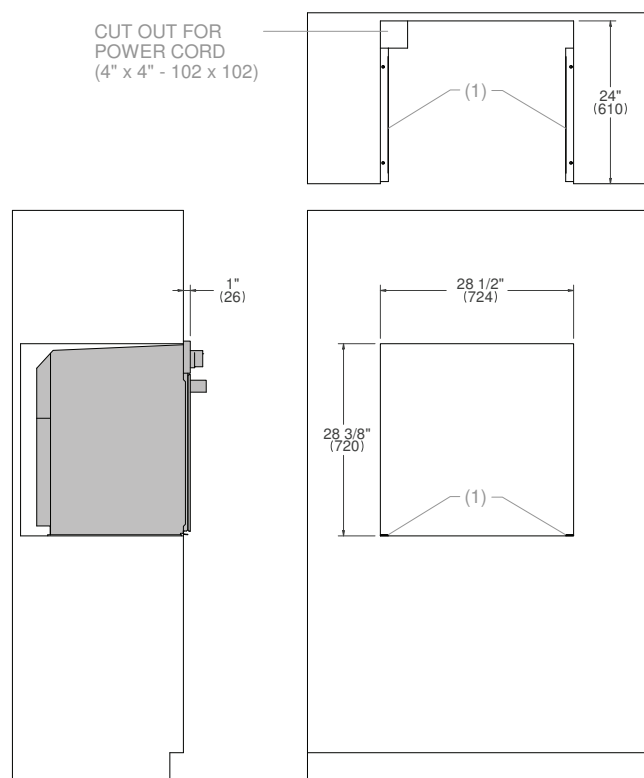
INSTALLING THE OVEN IN A TALL APPLIANCE HOUSING

The oven can be installed in a standard or flush application.

Finish the edges of the opening because they may be visible when the door is open.

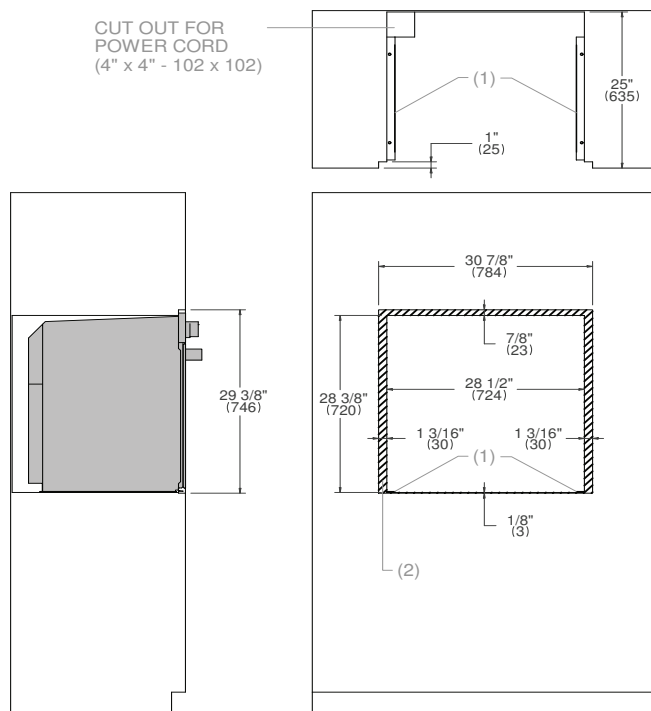
The clearance between the oven and the kitchen units must be enough to ensure sufficient ventilation and air discharge.

Standard installation



(1) Spacers - Parts of standard equipment

Flush installation

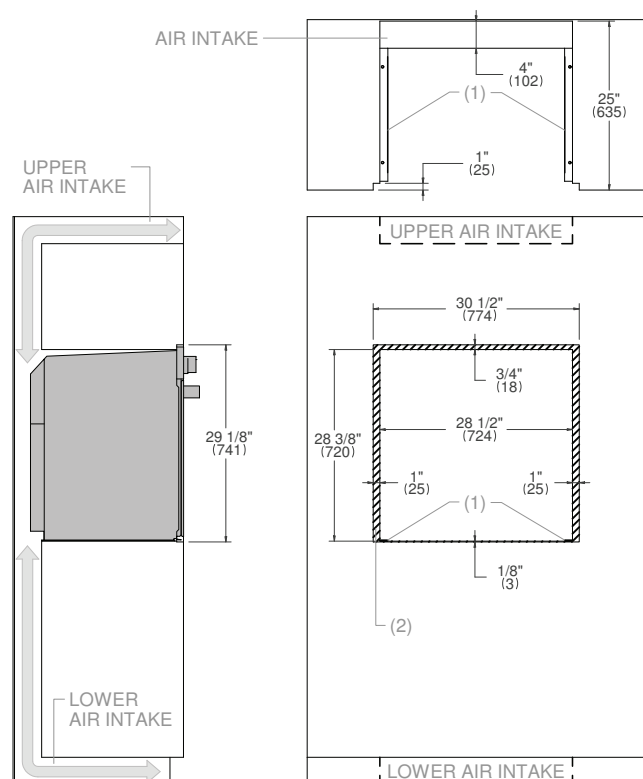


(1) Spacers - Parts of standard equipment

(2) Finished surfaces - Will be visible

Flush installation with reduced clearance

Ensure there is an opening in the top or bottom of the cabinet as shown in the figure.



(1) Spacers - Parts of standard equipment

(2) Finished surfaces - Will be visible

(3) Air Intake dimensions: 4"x28 1/2"

BEFORE INSTALLATION

INSTALLATION UNDERNEATH A BUILT-IN HOB

The oven can be installed in a standard or flush application.

Finish the edges of the opening because they may be visible when the door is open.

The clearance between the oven and the kitchen units or other installed appliances must be enough to ensure sufficient ventilation and air discharge.

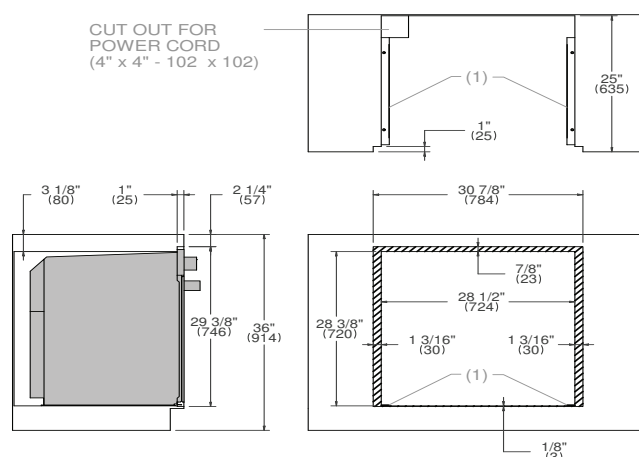
If installed under a hob, space must be left between the bottom of the hob and the top of the oven to allow for ventilation of the entire compartment.

Any ventilation openings required for the hob are to be added to those required by the oven.

See the design guide for the combination between the Bertazzoni Oven and Bertazzoni Hob.

The manufacturer shall bear no liability in the event of the oven being installed in combination with a hob from another manufacturer.

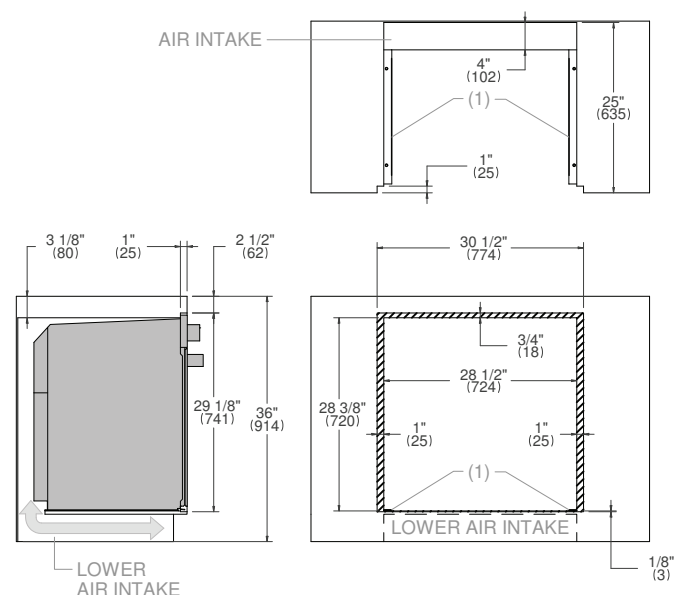
Flush installation



- (1) Spacers - Parts of standard equipment
- (2) Finished surfaces - Will be visible

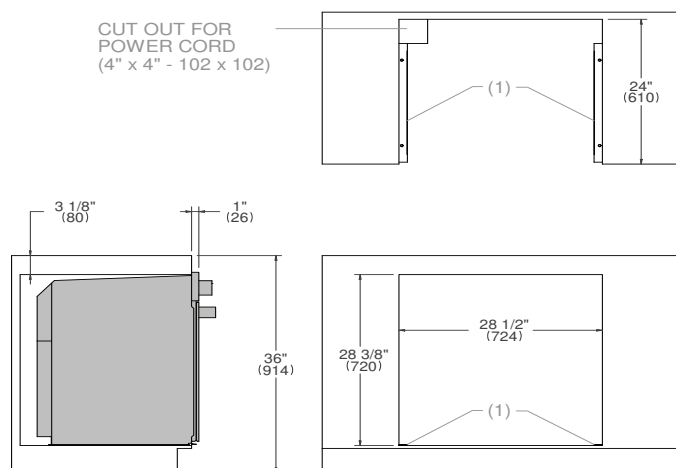
Flush installation with reduced clearance

Ensure there is an opening in the top or bottom of the cabinet as shown in the figure.



- (1) Spacers - Parts of standard equipment
- (2) Finished surfaces - Will be visible
- (3) Air Intake dimensions: 4"x28 1/2"

Standard installation



- (1) Spacers - Parts of standard equipment

BERTAZZONI PROFESSIONAL SERIES

30" INDUCTION COOKTOP

P304IAE

HIGHLIGHTS

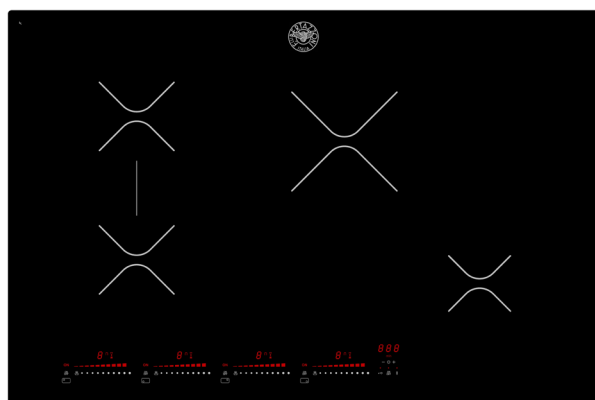
- The touch-through-glass controls provide instantaneously accurate feedback and an intuitive user experience.
- Heating zones of up to 3700 W reduce the time-to-boil by over 50% vs. conventional cooktops.
- The enormously efficient 6th generation induction technology represents the utmost in energy efficiency.
- Digitally controlled sensors and residual heat indicators ensure a highly efficient integrated safety system.
- The bridge element zone accommodates a large variety of cookware shapes and cooking needs.
- The smooth and wear resistant ceramic glass surface was designed with the ultimate ease-of-cleaning in mind.

FEATURES

Induction zones	4
Back right	Ø 11" 1/4 - 2600 W (booster 3300W-3700W)
Front right	Ø 9" 1/4 - 2100 W (booster 2600W-3700W)
Back left	Ø 8" 3/4 x 7 1/8 - 2100 W (booster 2600-3700)
Front left	Ø 8" 3/4 x 7 1/8 - 2100 W (booster 2600-3700)
Maintop	bevelled ceramic glass
Worktop control	touch
Timer	timed cooking function for each heating zone
Power levels	14
Bridge Function	1 bridge cooking zone
Stop & Recall function	yes
Auto-Stop	yes
Auto-Power	yes
Residual Heat indicator	yes

TECHNICAL SPECIFICATIONS

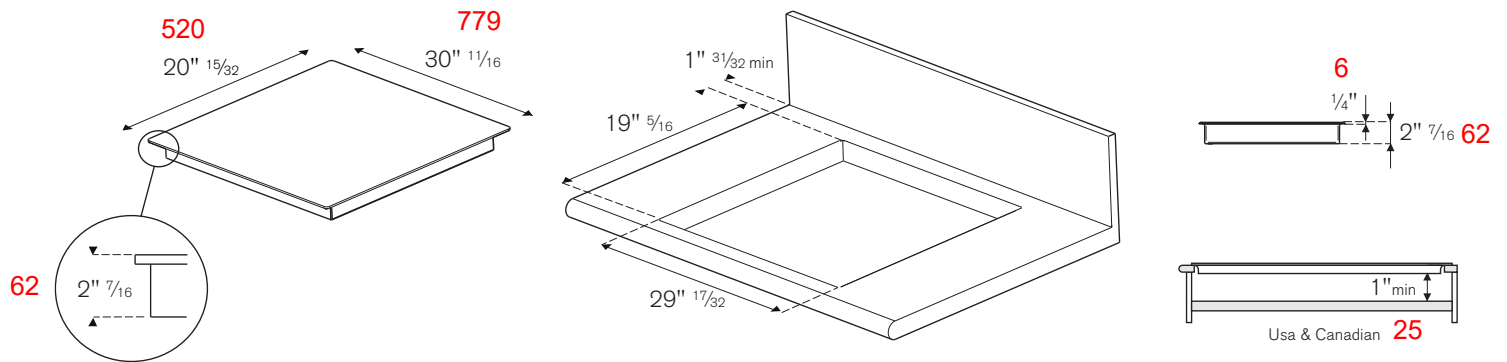
Electrical Requirements	208/240 Vac, 50/60 Hz
Max Amp usage, power rating	7400 W, 32 A
Certification	c UL us
Warranty	2 years parts and labor



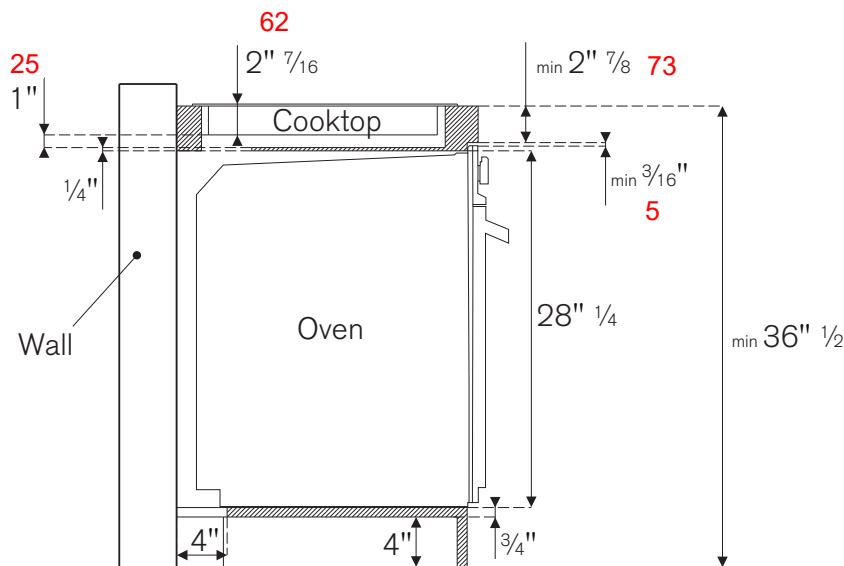
TO COOK BEAUTIFULLY
WWW.BERTAZZONI.COM

INSTALLATION INSTRUCTIONS

P304IAE



INDUCTION COOKTOP AND 30" BUILT-IN OVEN COMBINATION



This product requires the installation of a partition

Bertazzoni recommends to operate the appliance after it has been installed in a cabinet.

The kitchen cabinets shall be made of materials capable of withstanding temperatures at least 117°F (65°C) above room temperature in order to avoid possible damage to the cabinets during appliance usage.

Disclaimer: while every effort has been made to insure the accuracy of the information contained in this brochure, Fratelli Bertazzoni reserves the right to change any part of the information at any time without notice.

Fratelli Bertazzoni, Bertazzoni and the winged wheel brand icon are registered trademarks of Bertazzoni Spa.

KIN30XV

30 INSERT HOOD, 1 MOTOR 560 CFM



Complete your Bertazzoni kitchen with this practical ventilation insert.

Choose among 4 extraction airflow speeds, reaching a maximum flow performance of 560 CFM (cubic feet per minute).

Easily throttle down airflow to 295 or 395 CFM with the digital airflow reducer

Enjoy the ultra-quiet performance rated at 1.5 sonas (lowest setting)

Easily control all hood functions with the electronic controls or the optional ADA-compliant remote control.

Enjoy powerful illumination of the cooking surface with 2 long-lasting and bright LED lights, which also don't create additional heat and are energy efficient.

Filter out odors and grease with the aluminum mesh filters, which can be easily cleaned periodically in the dishwasher.

The hood comes standard for venting outside the kitchen, but can be easily modified for recirculation by installing the optional charcoal filters.

Designed and manufactured with pride in Italy.

Industry leading 2 years parts and labor warranty.

PRODUCT FEATURES

Size	30"
Hood type	Built-In
Hood finish	Stainless steel
Motor	1
Speed	3 + Booster
Hood control	Electronic with buttons
Lights	2 LED
Filters type	Aluminum mesh
Extraction power	560 CFM
Sound Level (min)	1.5 Sones
Recirculation	Yes
Duct cover	Not applicable
Duct size	6" diameter

TECHNICAL SPECIFICATIONS

Electrical supply	110 V 60 HZ - 410 W 3.3 Amp
Power connection	NEMA 5-15P with 59" power cord
Certification	CEC,UL
Warranty	2 years parts & labor
Packaging dimensions and weight	W 30 7/8" H 14 3/8" D 16 6/8" 24.92 lbs

OPTIONAL ACCESSORIES

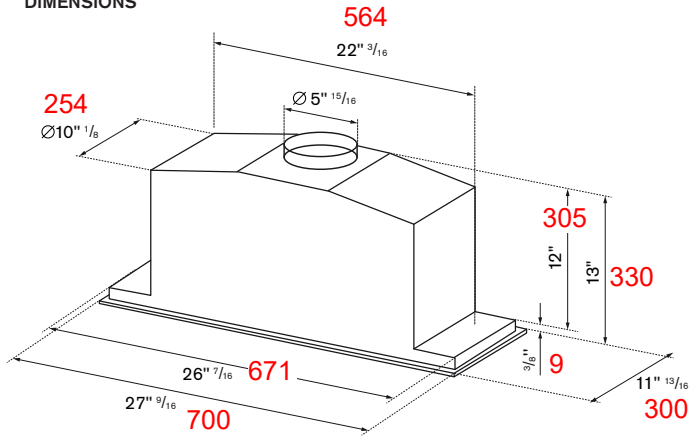
901531	Charcoal filters
901532	Durable charcoal filters
901575	Remote Control

KIN30XV

30 INSERT HOOD, 1 MOTOR 560 CFM



DIMENSIONS

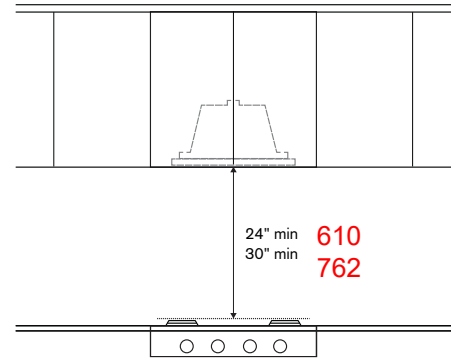


HOOD CLEARANCE

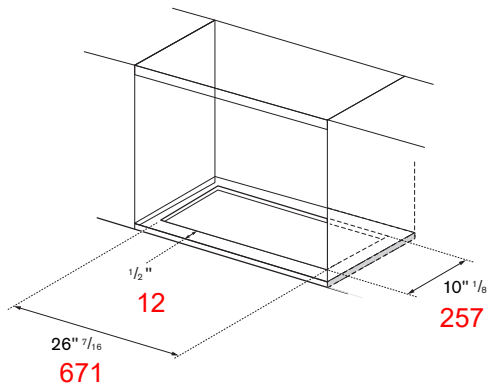
Recommended height above cooking surface

Min 24" for induction/electric worktop

Min 30" for gas worktop



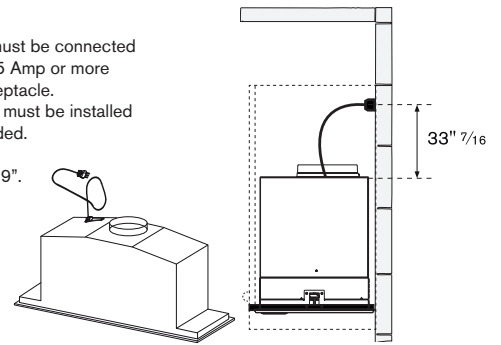
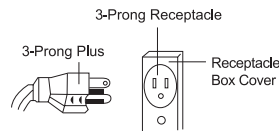
CABINET CUT-OUT



ELECTRICAL CONNECTION

The Power Supply Cord and plug must be connected to a separate 120 Volt AC 60 Hz, 15 Amp or more branch circuit, single grounded receptacle. The cord has a 3-pronged plug and must be installed into an outlet that is properly grounded. The electrical receptacle must be within the minimum cord length of 59".

WHEN USING 3-PRONGED PLUG



DW18PR

DISHWASHER 18" PANEL READY



PRODUCT FEATURES

Style	Panel ready
Interior finish	Stainless steel tub
User interface	Concealed electronic touch interface
Sound insulation	49 db(A)
Racks	2
Place settings	8
Wash cycles	6 – Normal, Heavy, Glass, Quick, Rinse, ECO
Wash options	4 – Sanitize, Hi-Temp, Heating Dry, Energy Save
Drying system	Heated drying
Filter	Triple-stage filter
Food disposer	3
Sprayer arms	Projected on floor
Lighting	Yes

TECHNICAL SPECIFICATIONS

Voltage, Frequency, Amps	120V 60Hz - 6.7 Amps 800W
EnergyStar	YES 237 kWh/yr
Power connection	Direct wiring, no cord
Water connection	Min. 3/8" copper pipe with accessible shut-off valve
Certification	UL, cUL
Warranty	2 years parts & labor
Packaging dimensions and weight	W 17" 3/4 H 32" 1/2" D 21" 3/4 Weight 79 lbs

Extra-quiet performance 49 dB(A)

Dual pump system with food disposer and triple-stage filter ensure maximum removal of dirt residues from washing water

6 washing programs, 4 washing options and heat-drying ensure a customizable and always effective wash program

Sanitize option elevates washing temperature to 158F for perfect and sanitized cleaning

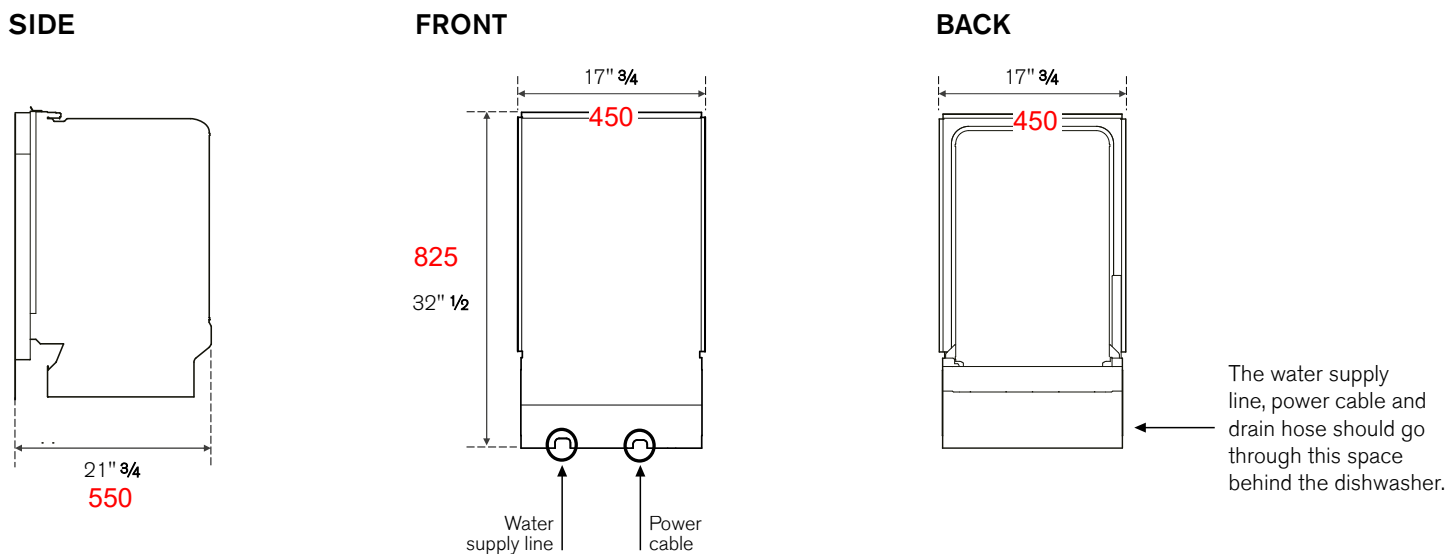
End-of-cycle indicator projected on the floor

Energy Star compliant

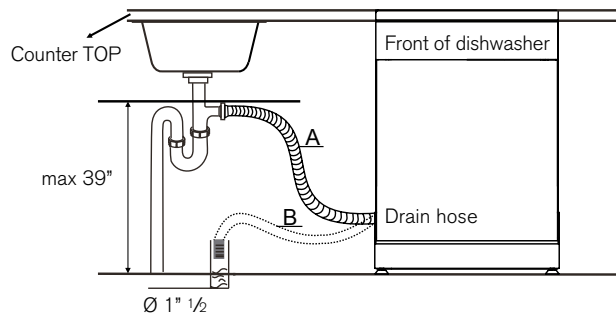
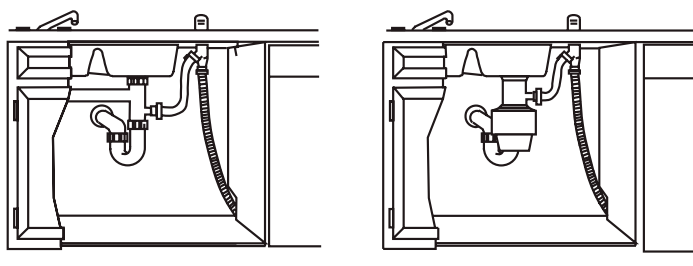
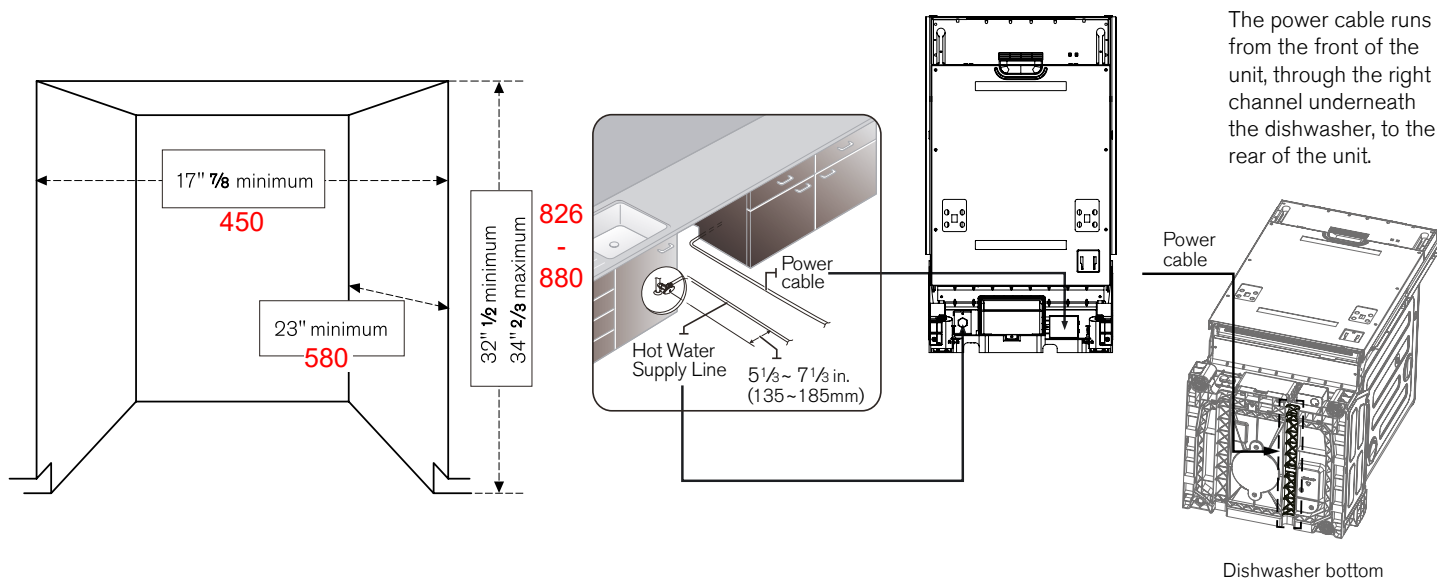
ADA compliant

DW18PR

DISHWASHER 18" PANEL READY



CUTOUT DIMENSIONS



DRAIN REQUIREMENTS:

Follow local codes & ordinances. Drain hose cannot exceed 10' distance to drain line.

AIR GAP / HIGH DRAIN LOOP:

Install a waste line with an air gap (not supplied) or high drain loop to prevent backflow. The top of the drain hose must be less than 39". Air gap must be used if waste tee or disposer connection is less than 18" above floor.